

### CONDITIONS FOR ALL TRUCK DELIVERIES

- All rates are based on round-trip for Knox Nursery metal racks.
- Orders of 4 racks or less must be unloaded and back on the truck within 1 hour.
- More than 4 racks, racks will be left, and picked up at a later date.
- A freight Surcharge may be applied, depending on fuel prices.
- Partial racks will be billed at full rack rate.
- Customer is responsible for racks until returned to Knox Nursery. Racks not returned to Knox will be billed to the customer.
- Ellepots are stacked on pallets and shrink-wrapped. Delivery can only be made to locations with loading dock capacity.
- Truck must be 75% full one week prior to ship date for confirmed truck delivery.
- **Due to Arizona Department of Agriculture Quarantine Requirements, we cannot ship racks to Arizona**

### MINIMUMS

To qualify for truck shipping the order must meet minimum size (see map and rates). Truck must be 75% full one week prior to ship date for confirmed truck delivery.

Please call for special rates on all orders over half a truck (13 racks or pallets) for any combination of plugs, liners or ellepots.

### TRUCK DELIVERY SCHEDULE BY ROUTE

Trucks run every week with sufficient volume, usually each week between Week #49 and Week #22, and seasonally the rest of the year. Please call to confirm.

Route	Description	Frequency
Florida	Within 250 miles of Winter Garden, FL	Weekly
Northeast	Stops along I-85 & I-95, ending in Northeast	Weekly Starting Week #49
Midwest (IL)	Stops along I-75, ending in Midwest	Weekly Starting Week #49
West (MO)	Stops along I-70, ending in Missouri	Weekly Starting Week #49
Texas	Stops along I-10 & I-20, ending in Texas	Weekly Starting Week #49

### RACK/PALLET AND TRAY SIZE CONFIGURATIONS

	48' Truck	53' Truck
Racks/Pallets per Truck	24	26

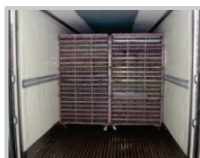
#### Trays Per Rack

Plug Programs	Trays Per Rack
288-cell trays	168 trays
144-cell trays	168 trays
105-cell trays	84 trays

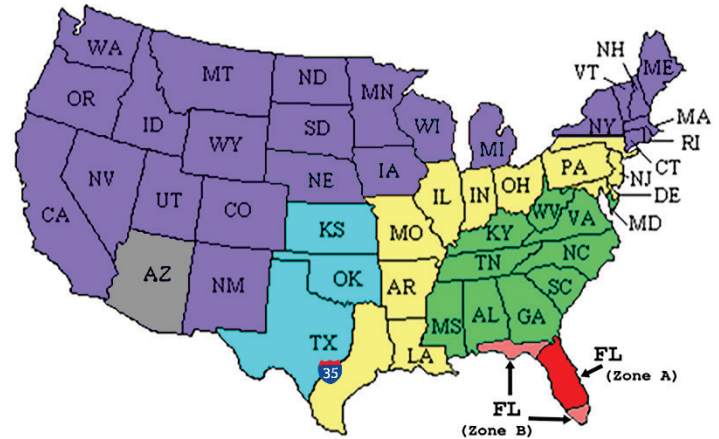
Vegetative Liner Program	Trays Per Rack
102-cell trays	80 trays
6x17-cell strips	80 trays
8x13-cell strips	80 trays
50-cell trays	80 trays

Poinsettia Liner Program	Trays Per Rack
8x13-cell strips	42 trays

Garden Mum Program	Trays Per Rack
50-cell strip trays	168 trays



### SHIPPING RATES FOR PLUGS, LINERS AND ELLEPOTS



Zone	Minimum	Each Rack or Pallet	Drop charge
FL	See Florida Rates Below		
1	1 Rack	\$150.00	\$85.00
2	2 Racks	\$260.00	\$85.00
3	3 Racks	\$340.00	\$85.00
4	Call for Quote		
AZ	Due to Arizona Department of Agriculture Quarantine Requirements, Knox Nursery cannot ship racks to Arizona		

### FLORIDA RATES FOR PLUGS AND LINERS

Minimum order for truck delivery is 40 trays. However, if our truck is in the area, we will make a stop for a minimum of 20 trays.

Florida Zone A	(Local, up to 149 miles from Winter Garden, FL)
	\$95 per rack, no drop charge, minimum charge \$95

Florida Zone B	(Over 149 miles from Winter Garden, FL)
	\$100 per rack, no drop charge, minimum charge \$100

### FLORIDA RATES FOR ELLEPOTS

Florida Zone A & B
\$100.00 per pallet, No Minimum

### EXAMPLES OF TRUCK PROGRAM FREIGHT CHARGES

Plants Per Tray	Trays per Rack	Plugs per Rack	Delivery Zone	Minimum Racks per Delivery	Minimum Plants per Delivery	Rate per Rack	Drop Charge	Total Freight Charge	Freight per Plug
-----------------	----------------	----------------	---------------	----------------------------	-----------------------------	---------------	-------------	----------------------	------------------

288-cell Tray Plugs									
280	168	47,040	1	1	47,040	\$150	\$85	\$235	\$0.0050
280	168	47,040	2	2	94,080	\$260	\$85	\$605	\$0.0064
280	168	47,040	3	3	141,120	\$340	\$85	\$1,105	\$0.0078

Standard Liners and Gerbera									
100	84	8,400	1	1	8,400	\$150	\$85	\$235	\$0.0280
100	84	8,400	2	2	16,800	\$260	\$85	\$605	\$0.0360
100	84	8,400	3	3	25,200	\$340	\$85	\$1,105	\$0.0438

Poinsettia									
100	42	4,200	1	1	4,200	\$150	\$85	\$235	\$0.0560
100	42	4,200	2	2	8,400	\$260	\$85	\$605	\$0.0720
100	42	4,200	3	3	12,600	\$340	\$85	\$1,105	\$0.0877